

NORTHERN RIVERS
COMMUNITY
FOUNDATION

2021 ANNUAL REPORT



 **NRCF**
we help you help others



Connecting people who care, with local causes that matter, to enhance community wellbeing.



CONTENTS

02 /	About NRCF
03 /	NRCF Team
04 /	Message from the Chair & CEO
06 /	Our Reach
07 /	Our Programs
10 /	Community Grant Recipients
27 /	2021 in Review
28 /	Named Funds
33 /	Sub Fund Register
34 /	Financial Reports
36 /	Thank You!



We acknowledge the traditional custodians of Bundjalung Country where we live and work, and their continuing connection to land, water, sea and community. We pay respect to Australia's First People, to their unique and diverse cultures, and to the Elders of Bundjalung Country, past present and emerging.

ABOUT NRCF



The Northern Rivers Community Foundation (NRCF) is on a mission to build a compassionate, generous and equitable Northern Rivers community.

Since 2004, the Northern Rivers Community Foundation has been responding to the changing needs of our community by connecting those who care with those in need.

Embedded in the community we serve – based on community empowerment, ownership and leadership – and with deep local knowledge and networks, NRCF partners with community organisations and philanthropists seeking to support positive change, build social equity and ensure the success of community development initiatives in the future.

NRCF has one of the largest footprints of any community foundation in Australia: from Tweed to Grafton, from the coast to Casino and Kyogle, we have around 300,000 people in our region and encompass seven Local Government Areas.

NRCF is building a sustainable legacy for the future of our community. As an independent public foundation, donations from community are pooled and invested in

ethical impact funds. Income from these funds supports our grant programs. This means we can provide a permanent source of funds to the community year after year.

With each donation, our investment fund grows, and so does the grant funding. We also encourage donations for specific grant programs and capacity building initiatives that aim to have an impact now. We partner with local individuals, families, businesses and foundations to help meet the needs of our community now, and in the future. Our grants touch on issues such as people's right to health, employment, higher education, happiness and creative expression, and the challenges of living in a regional community.

In 2021, our grants focused on those in the community who continue to be adversely impacted by recent bushfires and COVID-19. Our grant programs supported recovery and resilience projects, back to school vouchers for children in bushfire affected communities and financial support for university students.

NRCF invites you to become involved.



NRCF TEAM

PATRON

John Callanan

2021 BOARD OF DIRECTORS

Nicole Weber (Chair)

Lynda Dean (Deputy Chair)

Ninian Gemmell (Treasurer)

Cara Austen (Secretary)

Luke Barker

Allison Henry

Victoria King

Johan Kortenhorst

Marc Sofer

Resigning Directors in 2020

John Callanan

Rita McIlwraith

Todd Sotheren

STAFF

Emily Berry (Chief Executive Officer)

Juanita Keen (Finance & Administration)

Kyla White (Community Impact)

Lydia Plowright & Joanne Heath
(Marketing & Engagement)

COMMITTEE MEMBERS

Tricia Shantz, Victor Tawil, Susan Howland,
John Callanan, Carmen Stewart, Jane Hanckel,
Peter Dean

AMBASSADORS

John Bennett

Paul Jameson

OUR VALUES

In all that we do at NRCF we are driven by and committed to:

INTEGRITY

We are trustworthy, accountable and act with transparency.

BELONGING

The NRCF is a family of members and benefactors welcoming and including people from diverse communities across the whole of the Northern Rivers of NSW.

CARE

Connecting heartfelt giving with communities caring for our people, our wildlife and our natural environment.

SOCIAL RESPONSIBILITY

Our work strives to support communities in a balanced and considered way to be socially just, sustainable and to thrive.

BEING VISIONARY

We act boldly, courageously and with innovation so we may continue to support positive community impact in perpetuity.

MESSAGE FROM THE CHAIR & CEO

We thought 2020 was a challenging year and then came 2021, a year like no other. Great adversity has been faced by so many in our community, and as the only community foundation serving the entire Northern Rivers, our role of connecting those who care with those in need proved to be more important than ever.

In April, John Callanan stepped down from the role of Chair and into the newly created role of Patron through which he continues to contribute his diverse skills and fuel his passion for supporting those most in need in our Northern Rivers community. John's contribution as Chair of the Foundation is inspiring to say the least – over 7 ½ years guiding the Foundation and championing local philanthropy. He has also been instrumental in securing sustainable sources of funding to support the long-term future of the Foundation.

There were many highlights this year, including the distribution of \$236,707 in projects amongst 35 community organisations through the Recovery and Resilience Small Grants Program. We honour the commitment of each of these organisations in delivering on their planned projects, despite the constant challenges presented by the pandemic and recent natural disasters. We also increased our 'FRRR Back to School' program to support bushfire affected communities, with over 2,900 children receiving financial support for 'back to school' expenses. And on December 1st, a record \$327,177 in funding was granted to 49 organisations for the 2022 Community Grant Program.

“As a team, we are regularly inspired by all the people who are connected to the NRCF.”





Our Donor Event in April saw many of our big-hearted donors kick-start three new initiatives. The Patron's Circle which provides Circle donors the opportunity to connect with the drive and passion of our Patron John Callanan and take part in determining the future of the Foundation; the Women's Circle launched by our new Chair Nicole Webber is a group of 100 wonderful women who want to make a real and lasting difference in the lives of vulnerable women and girls in our region; and finally the Housing Fund to tackle the housing and homelessness crisis across our region, both now and in the future. We look forward to sharing these initiatives with you throughout 2022.

We also welcomed a new role at NRCF, a Community Impact Officer, thanks to the support of the Vasudhara Foundation. With a record number of grant recipients under the NRCF umbrella, having a deeper understanding of the need in our community and matching this data to donor funding is more important than ever. This important role is also driving NRCF's new Vital Signs project which uses community knowledge to measure the vitality of communities – gathering data and publishing accessible reports on significant social and economic

trends to tell the story of how communities are faring in key quality-of-life areas.

Here at NRCF we are a community within a community and every day we are humbled and inspired by the people in it - by those community organisations working on the frontline, by our caring and compassionate donors who step up when it matters most, by our funding partners who believe in our programs and help us deliver impact now, and by our volunteers and staff whose passion and commitment knows no bounds.

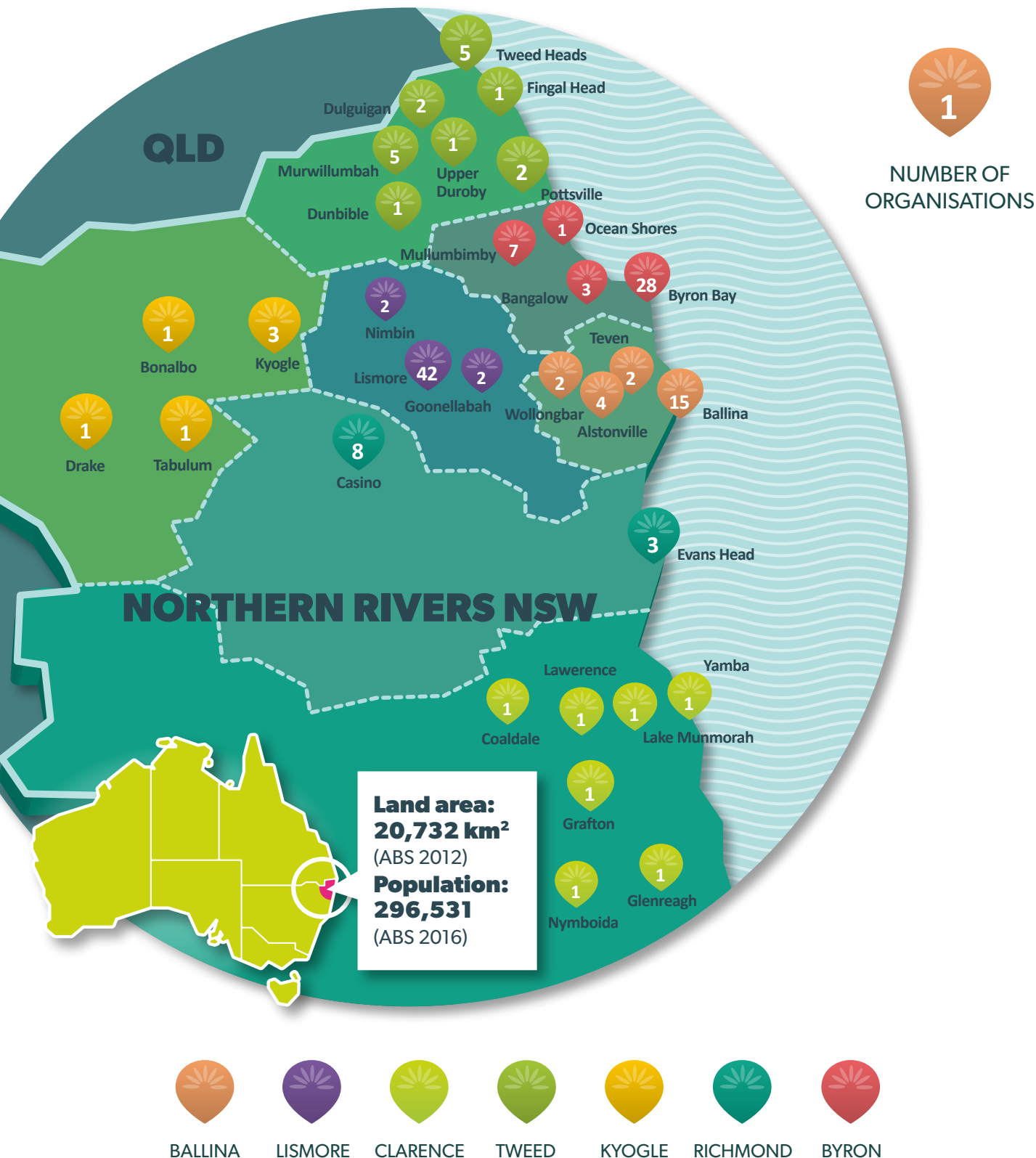
Together we are building a stronger community – the kind of community that looks out for each other, collectively builds resilience and has the ability to recover and regenerate no matter how rough the road ahead may lie.

Nicole Webber
Chair

Emily Berry
Chief Executive Officer

OUR REACH

Since 2005 NRCF has granted \$2,436,166 across seven Local Government Areas of the Northern Rivers, to 349 projects across 143 organisations.



OUR PROGRAMS

NRCF provides financial support through a range of grant programs that aim to respond to the changing needs of our community. In 2021, our programs included:

- **FRRR 'Back to School'**
- **SCU Bowen Education Fund Scholarship**
- **Recovery and Resilience**

FRRR – 'BACK TO SCHOOL' PROGRAM

NRCF believes that education is a fundamental right and that a quality education should be accessible, irrespective of your personal circumstances or where you live. However, many families in rural, regional and remote Australia struggle to provide the basics their children need at school.

That is why, in partnership with the Foundation for Rural and Regional Renewal (FRRR), the NRCF has been supporting the Back to School (BTS) Program since it began in the Northern Rivers in 2006, distributing over \$500,000 in redeemable vouchers to school children and their families in our region.

Bushfire Response

Many rural and regional communities are still navigating their recovery from the 2019-2020 bushfires, a journey compounded by the additional challenges caused by the COVID-19 pandemic. In partnership with FRRR, the NRCF supported over 2,900 children with \$145,000 in vouchers to families in need, working with 55 schools in disaster impacted areas from Nymboida to Rappville, Bonalbo to Woodenbong.

Grandcarers Program

The NRCF continues to support grandparents who are taking on the role of primary carer for their school age grandchildren and who may be struggling with the financial pressures from doing so. In 2021, \$50 vouchers were distributed to 325 school children under the care of grandcarers in the region. This program contributes towards basic needs for students and their carers, while acknowledging the important role of grandparents in supporting educational opportunities for their grandchild.

"Fifty dollars may not seem much, but for these families it can have a big impact, helping to cover the cost of a couple of school jumpers or a winter uniform, new books to start the term or even a sleeping bag that a child can use for school camp."

– Natalie Egleton, CEO of FRRR

IMPACT: Disaster Response; Education; Family Support

TARGET: Children & Youth; Aged

NRCF GRANT: \$145,000 to Bushfire Response and \$16,250 to the Grandcarers Program, supported by Foundation for Rural and Regional Renewal (FRRR)



Rappville Children Christmas Show 2020



SCU-Bowen Education Fund Scholarship recipient Chloe Power



IMPACT: Education

TARGET: Youth & Young Adults

NRCF GRANT: \$3,750 for one scholarship for an SCU student

SCU-BOWEN EDUCATION FUND SCHOLARSHIP PROGRAM

Since 2009, the SCU Bowen Education Fund has offered \$2,500 scholarships to financially disadvantaged students to help them achieve their education goals.

Peter and Julianne Bowen are passionate about supporting students with access to higher education.

With this goal in mind, the Bowens partnered with NRCF and Southern Cross University in 2007 to establish the SCU-Bowen Education Fund. Income from this investment fund supports university scholarships each year, assisting 24 young people since the program was established.

The scholarships provide financial assistance to help students overcome disadvantage, enabling them to focus on education and pursue their career dreams and fulfill their ambitions. Applicants are asked to demonstrate a commitment to the region through their contribution to their school and broader community, helping to keep emerging local talent in the area.

In 2021, Chloe Power, an Aboriginal woman of the Coodjimburra people (Tweed Coast) in the Bundjalung nation, received a scholarship of \$2,500 to support her journey through a Bachelor of Education. Chloe hopes to pursue a career as a schoolteacher.

Chloe is passionate about education and serves her community as a School Learning Support Officer at

the Southern Cross School of Distance Education, supporting Indigenous students experiencing personal and cultural challenges in their lives that prevent them from attending mainstream schools. She also finds time to mentor Indigenous female students at the Southern Cross K-12 School and Mullumbimby High School.

"I am truly honoured and grateful to be a recipient of the SCU Bowen Education Fund Scholarship. This scholarship has supported me both financially and academically as it has allowed me to purchase resources and equipment to complete all tasks and assessments in my course units successfully."

"My career goal is to gain a permanent teaching position where I have the privilege to teach, support and inspire young people, and this generous contribution has helped me get one step closer to achieving this goal."

Unfortunately the second scholarship student was unable to continue their studies due to family commitments as a result of COVID-19. The remaining funding will be carried over to 2022.

The SCU Bowen Education Fund is one of NRCF's Sub Funds. See p.27 or visit our website for more information.

RECOVERY AND RESILIENCE GRANTS PROGRAM

Respond, Recover, Re-build: Growing the resilience of our region

The Recovery and Resilience Grants Program was developed as a disaster response for not-for-profit organisations across the seven LGAs of the Northern Rivers region of NSW. Funded through the Resilience and Regeneration Fund, the grants round addressed both the impacts of recent natural disasters including drought and bushfire, as well as the COVID-19 pandemic, through small grants to aid in recovery and build resilience for the future.

Each year our small grants round offers a broad window into the important work of our grassroots community groups, providing valuable insights into the challenges they face and the issues they are working to address. It is our way of ensuring donors' funds fuel innovative place-based programs, delivering significant impact.

"Our role is not only to support these organisations to survive as they recover from recent crises, but also to thrive."

– Emily Berry, NRCF Chief Executive Officer

2021 HIGHLIGHTS

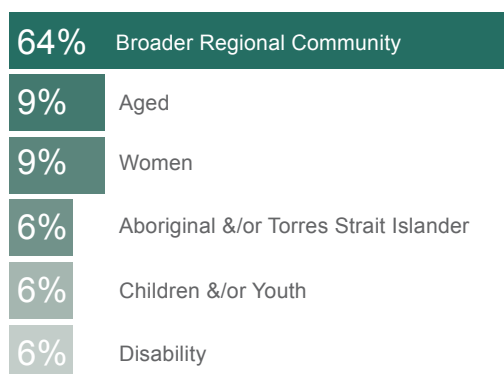
Together with our community of partners and donors, last year NRCF provided **\$236,707** in funding to **35 projects** across a wide range of key impact areas.

TOTAL IMPACT: NRCF R&R grants leveraged almost a million dollars in community projects for the Northern Rivers.

Our local donor community contributed 29% of total funding for the program, with the remaining 71% donated by local, national and international foundations and trusts.

To learn more about the impacts of our grants, visit nrcf.org.au/our-impact/impact-case-studies or sign up for our community newsletter to receive stories throughout the year at nrcf.org.au/subscribe.

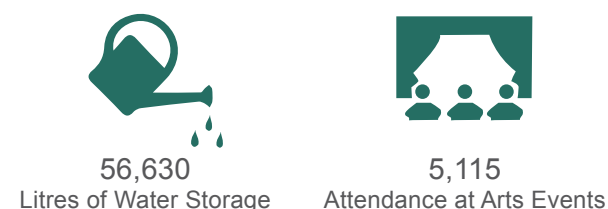
PRIMARY TARGET GROUP



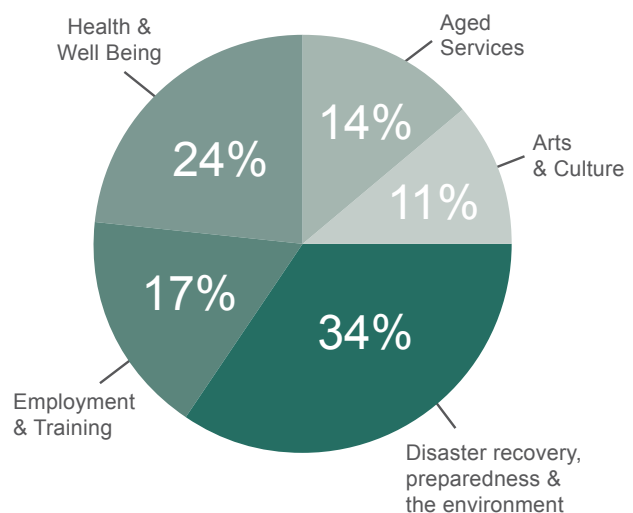
PROJECT TYPE



MILESTONES



AREAS OF IMPACT





THRIVE 2484

It Takes a Town: Nurturing connections to strengthen support & resilience

\$9,103

This project developed small-scale networks across communities in the 2484 region, with a focus on areas that are most at risk of fire and flood. The grant facilitated connections 'in good times,' in order to increase preparedness and responsiveness in times of crisis.

"The project played a key role in linking residents at risk of fire and flood with emergency service providers. It effectively strengthened disaster preparedness and response efforts in the communities of Kunghur, Burringbar and Murwillumbah, by hosting seven community events."

– CARMEN STEWART, FUTURESAPES

OUTCOMES:

- Seven events were held in four communities at risk of fire and flood in the 2484 postcode area.
- 450 people attended a large event at Kunghur in February 2021. St John's Ambulance, Red Cross Community Resilience Team, SES, Rural Fire Service, Northern Rivers Community Legal Centre and Tweed Shire Council hosted information stalls, training and activities.
- 49 natural disaster response information packs distributed; 15 people signed up to emergency phone trees; 51 disaster preparedness kits distributed; 32 residents took part in a game of 'what if' scenarios in relation to natural disasters.



NORTHERN RIVERS WILDLIFE CARERS

Fire trailer to spray flying foxes in heat events

\$6,850

Extreme heat events can affect many wildlife species, especially flying foxes that cannot withstand temperatures above 42 degrees Celsius. Large colonies of flying foxes, especially in the Casino and Kyogle regions, have been significantly impacted by bushfires. The grant funded a fire trailer to carry water to flying fox colonies to spray flying foxes during heat events.

"The fire fighting water trailer.. is exactly what we had wanted. Ready to go, but hopefully not needed!" –
SANDRA NORRIS, TREASURER, NRWC

OUTCOMES:

- 1000 L fire tanker fitted with a hose and pump to carry water.
- Significant reduction in the number of flying foxes that need rehabilitation.
- Preserving the flying fox colonies also brings an ecological impact, as they are a keystone species pollinating our native forests.
- It supports the carer teams resilience and ability to respond in emergencies.



FRIENDS OF LISMORE RAINFOREST BOTANIC GARDENS

Improving water delivery to the Lismore
Rainforest Botanic Gardens

\$4,422

The project supported the purchase and installation of a rainwater tank at the Visitor Information Centre in the Lismore Rainforest Botanic Gardens. The tanks were an investment in improved water delivery to the rainforest, supporting diversity and resilience in Wilson's Park species, uncommon plants and hoop pine forest areas. The project strengthened resilience, creating a buffer for periods of low rainfall and as an emergency supply in case of fire.

OUTCOMES:

- Volunteers are assured they can continue to plant rare and threatened species.
- Water supply is now more secure.
- The security of an emergency water supply in case of fire or drought.
- Rainwater can now be used in preference to chlorinated town water, to top up the proposed new frog pond.



THE SHED OF HOPE

Supporting community members
through connection

\$6,000

The triple effect of drought, summer bushfires and COVID-19 impacted many members of our community, leaving them struggling with everyday tasks, including shopping. This project provided food hampers, giving the double benefit of not only delivering food, but using the opportunity to ask, "Are you ok?" Recipients were struggling with financial and mental wellbeing, and the visits provided much needed resources, care and helped to lessen the impact of social isolation for many.

OUTCOMES:

- 150 hampers were distributed to 120 people in need.
- 40 X \$50 fuel vouchers, and 20 X \$200 medical vouchers.
- Areas supported included Kyogle, Richmond Valley and Clarence Valley.



NIMBIN COMMUNITY CENTRE

Harvesting water for water security

\$4,669

Nimbin Community Centre consists of eight buildings, housing over 20 vital community services. Situated on two acres of heritage listed grounds in the heart of the village, the project ensures water security for grounds and gardens during water restrictions associated with drought. Using the water, the team can maintain the gardens and site grounds. The site is now compliant with the NCCI Climate Chaos Mitigation Plan and the Nimbin Sustainability Plan. The community centre gardens and grounds have become more resilient, and in turn, the organisation and community, as well.

"It was heartbreaking to watch so many plants die during the drought and bushfires of 2019. This increased water tanks on site will mean that our gardens and grounds will be more resilient during the next dry period when water restrictions are imposed."

– ROBYN BERRY, GROUNDS PERSON

OUTCOMES:

- Two water tanks installed in the gardens, adding over 23,000L of water storage.
- Increased capacity to harvest water and store storm water from the site.
- Enhanced water security.
- An alternative water source for times when water restrictions are in place as well as during an emergency.



COALDALE BARRETT'S CREEK MEMORIAL HALL

Refurbishment of kitchen facilities to use for the community in times of crisis

\$10,000

Coaldale and Barretts Creek are remote isolated communities in the Clarence Valley that have been severely impacted by drought, bushfire, floods and COVID-19. The community hall has a history of over 100 years in the Coledale Valley, and the kitchen is described as the heart of the hall. The grant provided an upgrade to the kitchen facilities for community members, visitors and volunteers to use in times of need, including crisis food preparation in times of disaster and a social meeting place to promote wellbeing and recovery.

"From those of us who used it for the first time, thank you! It made our night just so much more enjoyable having a kitchen that is so inviting, modern and practical."

– COLEDALE COMMUNITY RESIDENT

OUTCOMES:

- Collaboration between community, trades, and Council.
- Removal of asbestos and the facilities made safe.
- The installation of new kitchen facilities and equipment just in time to host the community Christmas function.
- The hall now comfortably and safely hosts community functions including meetings, learning, wellbeing and support; social functions: birthdays, anniversaries, ceremonies, reunions, and special days.



CONTAINER OF DREAMS

Rapid Response Disaster Relief
Mobile Accommodation Units

\$10,000

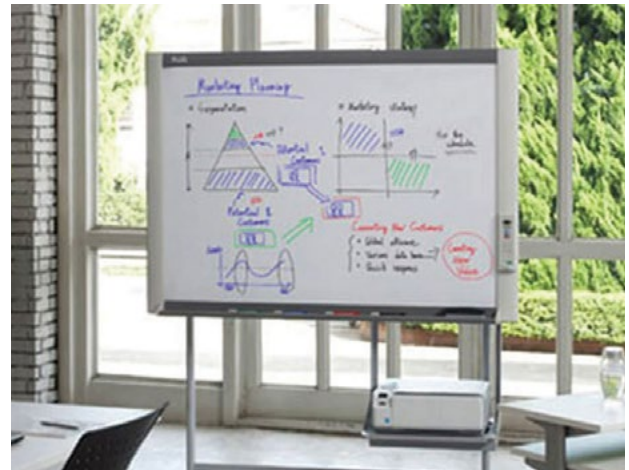
The project delivered four custom built mobile accommodation units to be stored ready for emergency deployment in the communities of Tabulam, Drake, Ewingar, Pretty Gully and surrounds. The communities have been severely impacted by fires, with over 200 homes lost, with many owners without the resources to rebuild. Knowing that assistance is ready when disaster strikes has brought a sense of relief to residents, replacing the sense of hopelessness with one of hope through a connection to the community.

"To know that the community has these units right here ...to help out when there's a disaster or if someone is in distress, well, yeah, I sleep better at night, knowing that."

– PAUL, LOCAL RFS MEMBER

OUTCOMES:

- Emergency accommodation at the ready in the case of natural disasters or other community need such as homelessness or domestic violence.
- Sense of relief to residents, and hope through a connection to the community.



GLENREAGH HEARTSTART

Equipment for emergency relief
coordination

\$3,095

A new electronic whiteboard supports emergency relief coordination and information sharing for the community of Glenreagh, when they seek support and information following natural disasters such as the recent bushfires and regular flooding events.

"The whiteboard will make a real difference to the community." – COMMUNITY VOLUNTEER

OUTCOMES:

- The ability to print off written notes taken at emergency briefings.
- Vital shared community resource for groups such as the Lions Club and the Community Hall and Progress Association.



MENTAL HEALTH SUPPORT GROUP

Supporting people whose lives have been disrupted by mental illness

\$10,000

The Mental Health Support Group (MHSG) is concerned with the welfare of those living with mental illness. They provide household items to those who struggle financially as well as clothing for mental health clients. Demand for services has increased since the onset of COVID-19. This project provided household essentials to mental health clients who are starting a new life focused on rehabilitation and recovery.

"The project has given dignity and hope to those who have suffered stigma and isolation because of mental illness. The clients are happy and feel good that they have a home with the things they need to lead a normal life".

– BARBARA SWAIN, PROJECT COORDINATOR, MENTAL HEALTH SUPPORT GROUP

OUTCOMES:

- Essential items purchased including: clothing and cleaning items, furniture, vacuums, three washing machines and a phone for mental health clients starting a new life.
- Dignity and hope to those suffering from stigma and isolation of mental illness.
- Clients reported feeling happy to have a home, and to be able to focus on rehabilitation and recovery.



NORTHERN RIVERS COMMUNITY GATEWAY

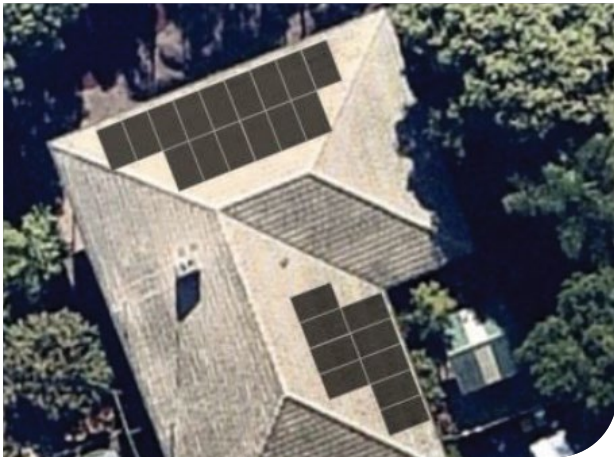
Trauma Counselling – COVID-19 Response

\$10,000

As a key regional service provider, NRCG has observed exacerbated mental health conditions brought about by the multifaceted impacts of COVID-19. NRCG provided counselling support for all cross-sections of the community via phone and online conferencing, to support the most vulnerable adults in their recovery and in rebuilding their lives. The counselling team was also supported with training, and an array of additional resources including technological support, to ensure high standards of delivery even in remote areas. Increased resilience has been reported as a result of the counselling, by supporting individuals to develop coping mechanisms through periods of high stress and anxiety.

OUTCOMES:

- Generalist counselling sessions were provided over the course of six months to offer support in processing the impacts of COVID-19.
- 21 clients aged between 22 years and 63 years participated; 20% of clients identified as Aboriginal; two clients identified as having a disability.
- Clients reported greater regulation of emotion, greater coping skills regarding stress and anxiety, improved sense of hope towards the future, and improved sense of personal and familial safety.



WOMEN UP NORTH HOUSING

Solar Panel at Bugalma Bihyn
Aboriginal Women, Young People and
Children Refuge

\$5,000

Women Up North Housing (WUNH) supports women, children and young people impacted by domestic/ family violence, trauma and homelessness. The project included installing a flexible solar array on the roof of the refuge, to increase ongoing economic viability and capacity to provide utilities and services such as cleaning, safety lighting and air conditioning, and mitigate the impact of some clients' incapacity to pay a contribution to their lodging.

"We are very happy with the outcome and grateful to NRCF for this grant."

– JILLIAN KNIGHT-SMITH

OUTCOMES:

- Review of original solar system and installation of a solar panel array on roof of First Nations Refuge building Bugalma Bihyn (Healing/ Safe Place).
- The panels delivered a \$1,103 quarterly bill saving.
- The subsequent reduction of electricity bills also enabled WUNH to install an air conditioner for clients in the lounge area.



NORTHERN RIVERS WOMEN AND CHILDREN'S SERVICES

Foodscapes: cultivating community
resilience amongst women through
food growing skills

\$10,000

'Foodscapes' has created a more resilient Lismore by offering women in the Lismore LGA opportunities to learn practical skills to grow food at home, while building emotional resilience and improving social cohesion and community participation.

"I feel I have much more capacity to be sustainable from my own garden. The program was inspirational because I met women who are growing enough to feed their families in a house yard. Amazing!"

– PROGRAM PARTICIPANT

OUTCOMES:

- Four half day workshops were delivered to 25 selected participants.
- In each session participants were given cuttings and seedlings to take home – most had some food growing by the completion of the program.
- A Facebook group was created and has been used for ongoing communication between group members.
- Members reported a significant increase in confidence in growing food, and expressed interest in learning more.



LITTLE WINGS

Community Wings for Clarence

\$6,000

In partnership with Royal Far West, Little Wings supports the recovery of communities affected by the 2019-20 bushfire disaster. Specifically, the Program provides direct medical support to seriously ill children (0-12yrs) and their families in the Clarence Valley, to improve the resilience and wellbeing of children and decrease the likelihood of long-term adverse impacts.

"After 10 months, the program has exceeded every expectation and reached hundreds of families in need... and it was the support of our partners that saw this program fly." – CLARE PEARSON, CEO, LITTLE WINGS

OUTCOMES:

- Four clinics were delivered to 59 children aged 2.5 to 12 years.
- 3% of participants were from a culturally and linguistically diverse background.
- 30 local professionals received direct training and support to skill up.
- Wrap around medical intervention provided.
- Families, teachers and local support services received training and programs to support child tele-health sessions.



LAWRENCE PUBLIC SCHOOL P&C

Lawrence School Community Garden

\$3,490

Lawrence is a small regional town in the Clarence Valley whose P&C has been unable to host fundraising events due to COVID-19. This project supported the completion of a new Community Garden to welcome and connect children and families of the local community. This was designed to encourage birds, bees, frogs and insects to visit and provide reading nooks for families to sit, read a book and enjoy.

OUTCOMES:

- The garden space has now been transformed, allowing families to walk through the garden and enjoy the space.
- Parents of the school and neighbours adjoining the school are now connecting with the space.
- The children can safely enjoy the flowers in the garden.



KYOGLE FAMILY SUPPORT SERVICES NEIGHBOURHOOD CENTRE

“It All Begins with Love” - a Family and Domestic Violence Theatre Mentorship Program

\$10,000

Kyogle LGA is reported to be the fourth highest in NSW for hospitalisation due to interpersonal violence. Severe drought, bushfires and the COVID-19 lockdown placed this vulnerable community in a precarious position with evidence suggesting that post disaster domestic violence was on the rise.

KFSS received the NRCF Recovery and Resilience Grant to help facilitate a peer-based mentorship program with women who have experienced family abuse and violence through the verbatim play “It All Begins with Love” by Rod Ainsworth. The play was a powerful reminder that domestic abuse and violence is a serious and frightening issue among families and relationships in our Northern Rivers Community.

Following the play, the producers have continued to receive feedback from the local community, and the level of awareness of domestic violence has risen. Several men approached the team to talk about representation, leading the producers to consider starting a local support group for men. A young woman asked for support and connection to the LGBTQ community. Another team member was approached weeks after the play and told, “Thank you. Because of that play, I found the courage to leave my abusive relationship.”

OUTCOMES:

- The eight-week mentorship program involved 10 participants, who engaged with the script, performance and production of the verbatim play.
- A seven-person local support crew offered assistance with the event.
- 150 people attended the performance and enjoyed the meal served.
- The project achieved inclusion and relevance with LGBTQ people and Aboriginal people with strong representatives from both communities evident in the audience, in the play as performers and in the mentorship program.
- It promoted resilience and regeneration, intentionally shaping long-term generational outcomes through women challenging violence by not excusing, accepting, dismissing or hiding it.

“This production was amazing. Those who participated in the delivery of this play were remarkable, empowered and amazing to watch. It was a captivating performance and I would strongly recommend everyone to go and see it.”

– TRACEY KENDALL, COMMUNITY SUPPORT MANAGER, MOMENTUM LISMORE



TWEED BYRON AND BALLINA COMMUNITY TRANSPORT (TBBCT)

A new vehicle for community transport
\$10,000

TBBCT provides individual door-to-door transport for medical and other appointments, including social and recreational trips, where there is capacity. They also offer regular shopping and social bus outings. The grant was used to buy a small Kia Seltos SUV to build capacity within the organisation and take more people on more trips.

"Thank you to the NRCF and your supporters and to the James Frizelle Charitable Foundation. We are so pleased to be recipients of this grant. It will make a real difference to us as an organisation and to our volunteers and clients, enabling us to provide more trips in greater comfort". – KATE GEARY, TBBCT

OUTCOMES:

- Safely delivering TBBCT's clients on over 115 trips per month.
- 460 individuals have been able to attend their appointments across the Tweed Shire and South East Queensland.
- Both drivers and clients are now able to enjoy the safe, comfortable and modern vehicle.



LOUISA JOHNSTON CENTRE

Bonalbo Social Day - Let's Do It!
\$5,000

In response to the ongoing drought, recent bushfires and COVID-19, the Louisa Johnston Centre, based in Bonalbo in the Kyogle shire, hosted weekly 'Social Days' for the residents, especially those who are isolated, disadvantaged, lonely and/or aged. The project build a sense of community, purpose and togetherness for those who experience isolation and hardship in this rural area.

"I live on my own and was interested in meeting new people in Bonalbo and surrounds. On my first visit I was pleased to meet a lady I hadn't previously met and enjoyed having lunch with her and others. I'm not normally a crafty person, but I took part in an activity making gift cards and made a card for my sister. She loved my card and was impressed I had made it for her personally". – JILL GORRY, ATTENDEE

OUTCOMES:

- The project launched in February 2021, offering small craft and activity groups with a social focus to the community.
- Projects included: greeting cards, mosaics, macrame, rag weaving and rock painting.
- Enjoyed by 58 members of the community, along with morning tea or lunch.
- Participants included a wide crossection of participants including men and women, homeschooling parents, and elders living alone.



BYRON BAY COMMUNITY ASSOCIATION

Byron Elders Online Connect
\$5,000

Mandatory social isolation and ongoing COVID-19 restrictions severely impacted the wellbeing of Byron Shire seniors. The project mitigated that impact by delivering an outreach training program designed to increase their digital skills, enabling them to maintain connection with friends, family, services and online resources.

"I'm really grateful for this fantastic program. Both tutors were excellent and informative. It's terrible living out on a property with no driving licence and deteriorating eyes so, for me, the computer is the greatest thing since toffee apples. Through this program I can stay connected with the world and I won't be left behind."

— MARGARET BROWN, 87 YEARS OLD

OUTCOMES:

- Supported 75 seniors to improve their digital literacy skills and engagement with 6 community-wide organisations.
- 93.1% of participants reported feeling comfortable accessing online community service announcements and alerts through websites, social media and apps.
- 86.7% of seniors reported a greater sense of autonomy and felt better equipped to complete digital tasks on their own.



BALLINA SHIRE DEMENTIA-FRIENDLY COMMUNITY ALLIANCE

People with dementia and carers
- Building digital literacy during COVID-19

\$10,000

This project helped build the recovery and resilience of our Ballina Shire Dementia Friendly Community (BSDFC) Alliance-Advisory Group, which consists of people living with dementia and their carers. The project aimed to provide training to build digital literacy skills among Advisory Group members to reduce social isolation during COVID-19.

OUTCOMES:

- Participants reported significantly increased self confidence in using technology.
- The use of technology to connect through Zoom, WhatsApp and Facetime more than doubled.
- The number of people who had not talked to loved ones in the last four weeks halved.



SPRUNG INTEGRATED DANCE THEATRE

The Safe and Sustainable Program

\$3,375

The Safe and Sustainable Program supported monthly workforce meetings and training for 16 workers to address new COVID safety requirements and be trained on COVID safety protocols. The project allowed for collaboration to expand the suite of dance and physical comedy programs online to people with disability and identify new opportunities for sustainable program delivery.

"Dear Sprung!! I just wanted to pass on my thanks and gratitude for the work that has gone on to prepare Sprung!! to flip so quickly from face-to-face to online Zoom. Having an online zoom timetable that had been clearly thought out and prepared was so amazing. Alice came home from Sprung!! on Monday, very positive about the lockdown, she has a clear path forward with Zoom. ... As you can imagine the flow-on impacts are immeasurable. Thank-you." – JODIE

OUTCOMES:

- The Sprung team met seven times; and 92% of the team requested that strategy discussion should be a priority in team meetings; 81% of the team said that health and safety had improved.
- The COVID-19 safety plan updated and released in early 2021 incorporated feedback.
- The team developed a 2021 program plan, identifying new opportunities for the year.



FAMILY SUPPORT NETWORK

Softfall Access Paths – South Lismore
Playgroups

\$5,000

This project supported the completion of the Health Food Education Project, allowing year round access for all children to the edible garden. Located in a flood zone, the project provided concrete pathways and a flat dry space for the playgroup children. Come rain or shine, the playground is now accessible to all, including prams and families who have a member with a physical disability. The organisation can arrange more activities outside that promote children's early childhood development.

"The new playground has connected the different vegetable patches and fruit trees in the garden, and the children have so much fun using the paths to water the plants, run and play. We are still receiving great feedback from the parents who comment on how lovely the space is, and how lucky the Lismore community is to have a space they can bring their children to."

– BRADLEY BOWER, FSN GENERAL MANAGER

OUTCOMES:

- The area is now enjoyed four times per week by the vulnerable families that attend Supported Playgroups and Babies Groups.
- Children with physical disabilities have benefitted significantly, with better access to the whole yard, including the vegie patch, sand pit, morning tea area, and berry garden.
- Toddlers benefit from SoftFall paths while learning to walk.
- Babies and toddlers are now spending much more time outside, and older children have invented new games to play now that they have access to a much wider area.



SYNERGY GROUP

Synergy Automation

\$10,000

Synergy is dedicated to providing meaningful employment to those living with permanent disabilities. To ensure health and safety during COVID-19, Synergy had to reduce the number of staff attending work. Conversely, online sales increased and supply could not meet demand. The grant provided for the purchase and installation of machinery to facilitate their transition from a manual processing and packaging to a semi-automated service. This will support sustainable growth in the operation, while continuing to provide employment opportunities, training and new skills for the local adult with a disability workforce.

“The purchase of these machines has given Synergy Group a future, we look forward to helping our supported workforce learn new skills and importantly give more employment opportunities to adults living with a disability in our community.” – SARAH GREEN, GENERAL MANAGER

OUTCOMES:

- New machinery was purchased to semi-automate factory lines.
- Staff and supported employees learnt new skills to operate the semi-automated facility.
- Six new clients were onboarded thanks to the new machinery.
- Upskilling will take place with each new client and further develop the skills of the team.
- Increased scope and capacity has enabled them to secure new business, and ongoing employment for supported employees.



RENEW FEST

The Byron Shire Resilience and Regeneration Roadshow

\$10,000

This project delivered a series of events designed to inspire, inform and mobilise a Resilience and Regeneration Movement for local community organisations, regenerative businesses and Byron Shire residents. The grant supported the program planning and production of the event, resource development and a multi-channel media campaign.

“The Roadshow project helped Renew Fest recover from the economic and organisational impact of its forced cancellation in 2020. ...It built confidence in the community that Renew Fest has survived the blow of covid and was definitely returning. The outcome of which was the great success of the festival this year, our best yet”. – ELLA ROSE GONINAN, PRESIDENT, RENEW FEST

OUTCOMES:

- Six free local roadshow events across the Byron Shire, the last of which was a special zone - the “Resilience Hub” at Renew Fest, visited by over 3,000 people.
- Each of the meetings was attended by up to 50 engaged local residents.
- Special guests were interviewed and recorded live by James Perrin and published online, as part of The Overview Effect Podcast Series.



BORDER RANGES RICHMOND VALLEY LANDCARE NETWORK (BRRVLN)

Online content for landholders
and schools

\$2,707

Under COVID-19 restrictions BRRVLN was unable to proceed with a series of events, workshops and field days on landscape management for landholders to respond to natural disasters, as well as support their biodiversity and sustainable agriculture practices. The project delivered training for local Landcare staff to create and present online video content in an engaging and educative way. The platform gives landholders access to information and provides support during their drought and bushfire recovery endeavours.

"We have greater confidence in our ability to tell our stories across these Landcare networks on the north coast. We are developing a catalogue of footage that will help us communicate with the broader community and contribute to future projects." – GAVIN TINNING, BRRVLN

OUTCOMES:

- A video production workshop was held in Kyogle, with nine Landcare staff attending from Tweed, Brunswick Valley, Richmond, Clarence and Border Ranges Richmond Valley Landcare.
- The team gained skills in creating compelling imagery and stories, and prepared video content ready to edit and upload to their Landcare Network page.
- Video-related equipment was purchased including: camera and related storage; batteries, tripod and carry case.
- The BRRVLN web page and Youtube channel were updated.



BYRON YOUTH THEATRE

'Our Home Holiday Town'

\$7,000

Byron Youth Theatre, in collaboration with Southern Cross University, created an original production and accompanying workshop focusing on the mental health issues of growing up in a regional town before and after the impact of COVID-19. The team devised and produced a poignant and powerful theatrical play, "Our Home Holiday Town" depicting the range of issues. The young people involved learnt about the psychological impacts on themselves, their peers and their community, of living in a tourist destination specific to this extraordinary time. Discussions around strategies for sustainable tourism in the region benefitted all participants involved in the consultation process.

"I loved the local references, it was really moving and the final speech was brilliant- calling us to action!"

– ANONYMOUS

OUTCOMES:

- Participants received training in interview techniques that were used to interview young people in the community as part of the research and development for the play.
- The play was presented live twice in December 2021 and a recording will be screened in 2022 to local schools unable to attend due to COVID-19 restrictions.
- 150 audience members signed the Byron Pledge, to follow responsible tourism principals, protect and support the region.



NORTHERN RIVERS PERFORMING ARTS (NORPA)

'Flow': a contemporary retelling of ancestral stories around culture, land and water

\$5,000

Mitch King, a Yaegl Bundjalung man, presented 'Flow', a one-man show inspired by community and country, and told through contemporary movement and hip-hop. 'Flow' aimed to strengthen the Indigenous voice and engage young people through a contemporary retelling of Indigenous knowledge and stories. Sharing this knowledge of connection to place, to land and to waterways is key to the current and future resilience of Aboriginal people.

"I didn't know doing something like this was possible, seeing Mitch on stage is so inspiring".

– FIRST NATIONS AUDIENCE MEMBER

OUTCOMES:

- Three creative engagement events were held with local indigenous communities and general community as part of the creative development of Flow.
- 115 people attended the work in progress showing in November 2020.
- More than 950 people attended the presentation of Flow in July as part of the 2021 NORPA Season.



CREATIVE MULLUM

Support the restaging of Ingenuity
Festival 2021

\$4,500

This grant supported the engagement of a Development Officer to deliver the Ingenuity Festival 2021. By building the capacity of CREATIVE MULLUM, the festival provided creative cultural development activities and supported the recovery of artists following the impact of COVID-19.

"We learned to be creative and resourceful. We learned that even when funds were scarce and environmental issues threatened to close us down, we were able to manifest excellent alternatives that provided a very fulfilling show."

– CHRISTOPHER DEAN, TREASURER, CREATIVE MULLUM

OUTCOMES:

- 25 sculptors were engaged in preparing creative ideas in tangible 3-D form.
- The Ingenuity Maquette Show launched with 27 outstanding pieces selected for final viewing during the three-day exhibition.
- 450 locals visited the exhibition.
- A new sculpture was selected to be mounted for five years in the Mullumbimby Sculpture Walk.
- The Chamber of Commerce spontaneously commissioned a work to be created for the centre of Mullumbimby.



CREATIVE CALDERA

Restaging of the Murwillumbah Arts
Trail 2021

\$10,000

This festival of visual arts and a major community event was cancelled in 2020 due to COVID-19. The grant supported a re-staging of the event over three days in March 2021, featuring visual artists, music and performances across Murwillumbah.

"Wow! What a weekend.. a massive thank you.. to the @murwillumbahartstrail organisers and volunteers for producing and running an amazing event. It was fantastic and something to be proud of". – @ORANGEADELA1

OUTCOMES:

- The Arts Trail featured 97 artists exhibiting work displayed across 26 locations across the Tweed Valley, including open home, galleries and pop-up locations.
- A wide range of free events including musical performances, workshops, Poets Out Loud, artist talks, a sketchbook competition, and street chalk art.
- The centre of the Murwillumbah Arts Space became a dance floor with a live DJ, drawing people together to dance and celebrate art.
- Local artists enjoyed sales of their work, and it also provided a springboard for collaborations and the development of emerging artists.

ONGOING PROJECTS

Many grassroots organisations have continued to experience challenges due to lockdowns and restrictions brought about by the COVID-19 pandemic, resulting in delays for 7 out of 35 projects funded. The following projects will continue to run through 2022:

EVANS HEAD-CASINO SURF LIFE SAVING CLUB

Equipment for Youth Lifesaver and Emergency Response Training Program

\$816

The Surf Club estimates a 50% decrease in membership due to the financial distress of local families. The reduced membership is also jeopardising the vital first aid and rescue services that the club provides to the community. In order to recruit and train new volunteers, the club requires a new data projector in the training room to facilitate social distancing.

HART SERVICES

Go West Of The Range

\$8,400

COVID-19 has drastically reduced volunteer numbers in charity organisations across Australia and the impact is greater in rural and regional areas. With volunteer support diminishing over the last three years, HART services will pilot a new volunteering and recruiting model to attract more volunteers to support essential community transport services 'West Of The Range', in Woodenbong, Urbenville, Bonalbo, Tabulam and all parts in between.

NYMBOIDA COMMUNITY GROUPS

Re-establishing Growers' Market and Village Newsletter

\$3,350

The November 2019 bushfires ripped through the town of Nymboida taking homes, sheds, bridges and businesses. COVID-19 has since caused delays to rebuilding, making recovery slow. The Nymboida Growers' Market and local newsletter provide opportunities for community building, information dissemination and socialisation. This project will provide support to two new volunteers to re-establish these important community activities and ensure the region has inclusive and supportive vehicles to get back on their feet.

WOLLUMBIN FAMILY SUPPORT

'Finding Me' recovery program for women who have experienced domestic violence

\$6,280

The number of domestic and family violence victims has increased by 10 per cent after the COVID-19 shutdown commenced in March due to social distancing, isolation, heightened stress and increased alcohol consumption, to name a few factors. 'Finding Me' is a facilitated, evidence based 12-week program that promotes self-determination, self-efficacy, and recovery from domestic violence by providing a safe, non-judgmental and inclusive environment where participants can access information, support, and connection.

RESILIENT BYRON

'Resilient Communities' Facilitator Training

\$10,000

A seven-module community education program that engages the community to strengthen disaster preparedness and resilience. Local facilitators are trained to empower communities to implement projects that build their resilience. It focuses on addressing resilience challenges including climate change, food, water, energy, infrastructure, economy, ecosystem and health.

SHARA COMMUNITY GARDENS

Future proofing Shara Community Gardens against drought

\$5,214

Water storage to build better drought and water efficiency resilience for a local community garden in North Ocean Shores.

RICHMOND LANDCARE

Post Bushfire Nest Box Monitoring program

\$6,436

Richmond Landcare is currently involved in a post bushfire recovery project for North Coast wildlife habitats, having installed 50 nest boxes in bushfire impacted areas. This follow up project will focus on a monitoring program measuring its success, and work with the community to establish monitoring procedures as part of a citizen science program.

To learn more about the impacts of our grants, visit nrcf.org.au/our-impact/impact-case-studies or sign up for our community newsletter to receive stories throughout the year at nrcf.org.au/subscribe.



2021 IN REVIEW

\$401,707

TOTAL GRANTS DISTRIBUTED

\$225,000

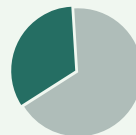
BUSHFIRE RECOVERY GRANTS

56% of NRCF's total funding for 2021

leveraging an additional

\$200,000

in community



1 in 3 grant projects supported disaster recovery, preparedness and the environment



\$145,000

in 'Back to School' voucher support for bushfire impacted families

BUSHFIRE IMPACT:

- 8,120 sq km of our region burned during the bushfires of 2019-20, creating \$366.1 million in damages to the local economy.
- In the Clarence Valley 6,151 sq km was burnt, representing 59% of the total area. 41% of primary production land burnt.
- In the Richmond Valley 1,226 sq km was burnt, representing 53% of the total area. 22% of primary production land burnt.

TOTAL VALUE OF CORPUS

\$2,651,553



Gift Fund 78%

Admin Fund 22%

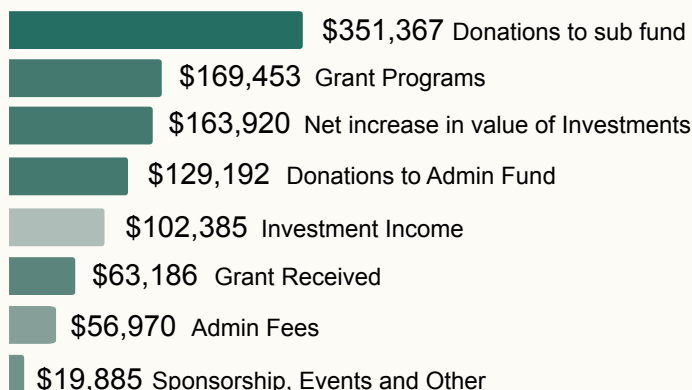
11%

 Operational Efficiency

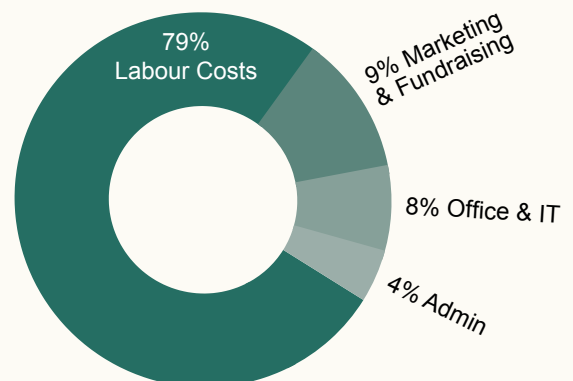
Operational expenditure as % of Corpus

REVENUE

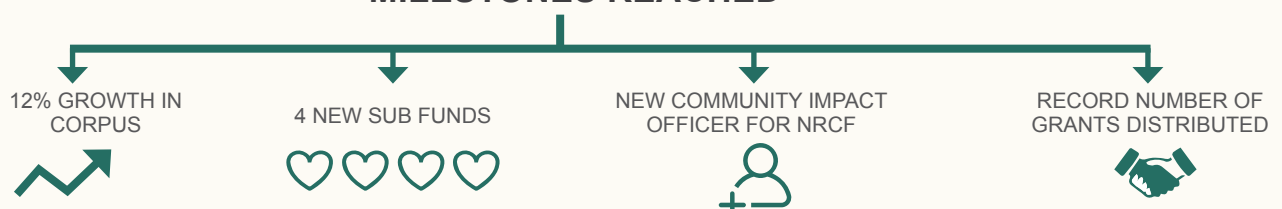
Grant Programs



EXPENDITURE



MILESTONES REACHED



NAMED FUNDS

A NAME IS A POWERFUL THING

The NRCF understands the value of a name. The gift of a name can also be priceless to our community and leave a long-lasting legacy. A Named Fund is a charitable fund you can set up at the NRCF, that acts just like your own Foundation.

A Named Fund can be established in your own name, your company's name or perhaps in the name of a loved one or associate. These Funds make a statement. They say something about values held, about influences felt, about relationships recognised. For more information about setting up your own Named Fund, please visit our website, email info@nrcf.org.au or call 0499 862 866.

We were delighted to establish four new Named Funds at NRCF in 2021.

COREM REVOLVING ENERGY FUND

There have been some exciting developments in the environmental space in 2021 with the newly created COREM Revolving Energy Fund in support of their Community Rooftop Solar Project.

Community-Owned Renewable Energy Mullumbimby (COREM) is a volunteer not-for-profit association that has been in operation in the Northern Rivers since 2015. Committed to helping transition the Northern Rivers to renewable energy via a community ownership model, COREM develops innovative projects that make switching to renewable energy easier, cheaper and more socially-energising, while removing obstacles across many aspects of the renewable energy system.

NRCF's COREM Revolving Energy Fund will help this environmental organisation raise more funding and connect with NRCF associated community organisations across the entire Northern Rivers to make it more affordable for them to reduce greenhouse gas emissions and save on electricity bills.

COREM is looking for community partners now! If you are a community organisation that would like to take part in this program, please go to our website for more information: nrcf.org.au/corem-sub-fund.



NEW CAUSE BASED FUNDS

One of the ways NRCF can support the community is by setting up a Sub Fund and advocating for solutions to address the challenges we are facing. Not only is it a vehicle to raise awareness, but fundamentally it is a vehicle to fundraise around the issue, drawing community's attention to the needs and asking them to contribute to the solutions.

If you are passionate about a cause and would like to partner with NRCF to fundraise for that cause, then please get in touch and we'll explore the opportunities of collective fundraising power!

Contact info@nrcf.org.au or call 0499 862 866.

NRCF HOUSING FUNDS

The Institute of Global Homelessness drives a global movement to end street homelessness. Part of their methodology is to support homelessness services to focus on prevention, and ensure homes for the most vulnerable. At NRCF we have taken this methodology head on, by setting up two Sub Funds that support these goals and sit under the NRCF Housing Fund.

The NRCF Housing Fund offers two avenues through which people can donate: the Impact Now Fund which addresses the immediate needs of our community, and the Housing First Fund designed to support longer term affordable housing solutions in our region.



IMPACT NOW HOUSING FUND

This 'Impact Now' fund helps community organisations who are on the ground supporting those in crisis. Local organisations can apply for this funding every year through NRCF's Community Grants Program. In 2021, NRCF and the community raised \$66,000 which was immediately granted to nine community organisations in November. For a list of these community projects and how they plan to tackle the housing and homelessness crisis in their area, please visit nrcf.org.au/grants/2022-community-grant-recipients.



HOUSING FIRST FUND

The Housing First Fund is focused on growing affordable and low-cost housing in our region. We are currently working on a variety of housing solutions that bring together local and state government, community housing providers, philanthropists, social impact investors, developers and pro bono professionals.

NRCF is playing a key role in the establishment of the new Byron Shire Community Land Trust, a not-for-profit organisation with the singular purpose of creating modest and well-designed rental accommodation for people with lower incomes. The first pilot project will be to provide safe, secure and stable housing for women and children on rural land between Mullumbimby and Brunswick Heads.

"The Byron Shire Community Land Trust will provide a scalable, self-perpetuating model that has the best possible chance of creating meaningful, long-term change. We look forward to working with the community and Byron Shire Council to make this pilot project a reality," says NRCF CEO Emily Berry.

ARTAID 2021

Local artist, friend of NRCF and founder of the Reality Check campaign, Liz Friend rallied 25 reputed artists from across the country to create ArtAid. With the help of local advocate Eunice Ching, Liz and NRCF launched Art Aid in support of those in great need during these challenging times. Committed to collectively recognising and positively addressing the situation, together they raised almost \$20,000 which formed part of the total amount of \$66,000 raised for housing and homelessness. NRCF was delighted to partner with Liz and Eunice and support them in their campaign.

"ArtAid 2021 has been a wonderful project to work on, bringing together artists who are passionate about helping the homeless in our area and people who love art and are keen to donate to such a worthy cause. I am very grateful to the NRCF for supporting both the Reality Check and Art Aid 2021 campaigns, and all the artists who donated their work. It has been a busy and very rewarding six months and, despite these tough times, it feels good to know we have been able to make a difference!"

— Art Aid Organiser and Artist, Liz Friend.





NORTHERN RIVERS WOMEN'S FUND AND THE WOMEN'S GIVING CIRCLE



In 2021 community service providers reported an increase in women with mental health concerns accessing specialist community services due to violence in the home, housing shortages and financial stress.

Momentum Collective, one of the leading community service providers in our region, tells us that over 2,500 women and children in the Northern Rivers accessed their specialist services for support and accommodation last year, due to having to leave their own homes after experiencing violence by their partners or family members. Overwhelmingly these women and children remained living in crisis or other temporary accommodation for periods up to a year due to the severe lack of affordable housing in the Northern Rivers.

The Northern Rivers Women's Fund supports community projects that focus on nurturing, empowering and inspiring women and girls to build

their own positive futures through social and economic wellbeing, employment, education and/or training.

NRCF has established the Women's Giving Circle to ignite women's philanthropy through the power of collective giving. 100 inspiring women donating \$1,000 a year pooled together to create \$100,000 will result in a \$50,000 grant into the community and a \$50,000 investment in the Northern Rivers Women's Fund each year.

"When women come together, we are a force of powerful change. The Women's Giving Circle unites women who want to make a difference, and who have the vision to know that positive change starts with us."
NRCF Chair, Nicole Weber

To join the Women's Circle or for more information please visit nrcf.org.au/womens-giving-circle.



OUR NAMED FUNDS

GENERAL GIVING FUND

The General Giving Fund is the main pool of funds which the NRCF seeks to grow and forms the bulk of our investments. All donations that are received automatically go into this fund, unless donors indicate a preference for a specific Named Fund.

THE ENVIRONMENT FUND

Established by George Lewin in 2006, with ongoing contributions from George and other members of the Northern Rivers community, the Environment Fund is dedicated to protecting our natural environment and building resilience in our communities.

SCU BOWEN EDUCATION FUND

Established by Dr Peter Bowen, his wife Julianne and Southern Cross University to support students from our region who show outstanding academic achievement, but whose ability to further their education may be affected by financial disadvantage or hardship.

TONY NARRACOTT MEMORIAL YOUTH FUND

Established by much loved local identity Tony Narracott, this Fund is targeted to help the youth of Byron Shire. Tony had a close relationship with the Byron Youth Centre and recognised the importance of the Byron area to all the youth in the region.

CHRISTOPHER AND LYNDA DEAN FUND

Established as a general fund to support the broad aims of the NRCF and with a strong commitment to assist in the administration expenditures as part of the initial donation. The Fund is also focused on supporting the arts and cultural events.

BALLINA SHIRE FUND

Seeded in November 2011 by John and Libby Welch from Optus in Ballina, Lynda and Christopher Dean, Councillor Sharon and Bruce Cadwallader and the NRCF itself. The Fund aims to build a long-term asset for the Ballina community that will continue to grow and support worthy service organisations in the Shire.

BYRON SHIRE FUND

Supported by Byron Shire Council, JHA Recruitment and Yes Optus Byron Bay to promote payroll deductions and regular giving, this fund is designed to further philanthropy in Byron Shire region. This fund grants to organisations delivering worthy projects across Byron Shire.

LISMORE SHIRE FUND

Supported by Optus Lismore, APN and JHA Recruitment and established to promote payroll deductions and specifically assist Lismore based community projects.

ANIMAL WELFARE & WILDLIFE CONSERVATION FUND

Seeded by Janét Moyle in 2018, the Fund aims to support animal welfare and wildlife projects across the Northern Rivers. Over two years, the fund has continued to grow, thanks to NRCF donors who share this passion, including local vet, Megan Kearney.

MCGRATH NORTHERN RIVERS FUND

Established by the team at McGrath Real Estate in Ballina in 2018. With so many people moving to the area, they felt an obligation to help maintain the region's beauty. By supporting projects to help increase the health of our rivers, they will in turn support business within our community.

TWEED SHIRE FUND

Established in 2018 by Luke Barker, with the aim to support and fund a broad range of projects related to children & youth, health & wellbeing, and environment & conservation in the northern reaches of the region.

PIKE MORRISON FAMILY FUND

Peter and Amanda Morrison established the Pike Morrison Family Fund in 2018, to make educational opportunities available to the disadvantaged.

SUSTAINABLE FOOD & AGRICULTURE FUND

Supported by Harvest Group and private donors, when this Fund reaches \$50,000 grants will focus on supporting not for profit organisations with educational scholarships, site specific projects and educational events focused on regenerative agriculture.

GAVIN GREENOAK FUND

Established by Suzie Deyris in 2019 in honour of her partner Gavin Greenoak, this Fund will encourage, value and support protection programs for vulnerable, endangered and critically endangered species of the Northern Rivers.

NORTHERN RIVERS WILDLIFE HOSPITAL INFRASTRUCTURE FUND

This special purpose fund was established in 2019 to collect grants and funds in support of the development of a new Wildlife Hospital in the Northern Rivers region.

BENNETT REGAN YOUTH FUND

Established by John Bennett and Jennifer Regan in 2020, to help support the youth of Byron, Ballina & Lismore shires particularly in areas such as activities, education, transport and vocational guidance.

CRYSTAL CASTLE AND KING FAMILY FUND

Established in 2020 by Naren and Sono King, to support the people, the animals and the environment of the Mullumbimby area.

RESILIENCE AND REGENERATION FUND

Established in 2020 by the NRCF in partnership with the Portland House Foundation, the James Frizelle Charitable Foundation, Yulgilbar Foundation and Global Giving to support local community groups in their response to crises.

NORTHERN RIVERS WOMEN'S FUND

Supports community projects that focus on nurturing, empowering and inspiring women and girls to build their own positive futures through social and economic wellbeing, employment, education and/or training.

HOUSING FIRST FUND

Helping our community respond to the local housing crisis, the Housing First Fund is focused on growing affordable and low-cost housing in our region.

IMPACT NOW HOUSING & HOMELESSNESS FUND

This 'impact now' fund helps community organisations right now who are on the ground supporting those in crisis. Local organisations can apply for this funding every year through NRCF's Community Grants Program.

COREM REVOLVING ENERGY FUND

This Fund will help COREM raise more funding and make it more affordable for community organisations to reduce greenhouse gas emissions and save on electricity bills.

SUB FUND REGISTER

AT 31.12.21

SUBFUNDS

	2021	2020
General Giving Sub Fund	\$663,599	\$535,843
Christopher & Lynda Dean Fund	\$226,731	\$205,925
Tony Narracott Memorial Youth Fund	\$149,752	\$126,699
Environment Fund	\$165,704	\$150,396
SCU-Bowen Education Fund	\$82,027	\$74,514
Byron Shire Fund	\$34,403	\$31,246
Lismore Shire Fund	\$15,763	\$13,680
Ballina Shire Fund	\$60,083	\$52,497
Animal Welfare & Wildlife Conservation Fund	\$117,862	\$95,886
Tweed Shire Fund	\$41,179	\$36,224
Pike Morrison Family Fund	\$11,911	\$10,502
McGrath Northern Rivers Fund	\$61,693	\$37,788
Sustainable Food & Agriculture Fund	\$15,573	\$13,153
NR Wildlife Hospital Infrastructure Fund	\$76,875	\$70,125
Gavin Greenoak Fund	\$17,360	\$15,263
Bennett Regan Youth Fund	\$67,669	\$58,749
Resilience & Regeneration Fund *	\$-	\$200,340
Crystal Castle & King Family Fund	\$55,344	\$25,838
NR Womens Fund	\$45,664	
Housing First Fund	\$54,203	
Housing Impact Now Fund *	\$66,379	
COREM	\$40,759	
Gift Fund	\$2,070,531	\$1,754,668
Admin Fund	\$581,021	\$607,459
Net Assets	\$2,651,553	\$2,362,127

INCOME AND EXPENDITURE

GIFT FUND

Income

	2021	2020
Donations Received	\$351,367	\$384,019
Program Donations	\$-	\$375,349
Income from Investments	\$102,385	\$51,622
	\$453,752	\$810,990

Expenditure

Administration Fees	\$61,039	\$78,417
---------------------	----------	----------

Net Income

Grants paid and provided	-\$240,770	-\$396,545
Net increase decrease in the value of Investments	\$163,920	\$27,560

Surplus / Deficit for the Year

	\$315,863	\$363,588
--	------------------	------------------

Balance Gift Fund at the beginning of the year

	\$1,754,668	\$1,391,080
--	-------------	-------------

Balance Gift Fund at the end of the year

	\$2,070,531	\$1,754,668
--	--------------------	--------------------

ADMINISTRATION FUND

Income

Administration Fees	\$56,970	\$75,601
Donations Received	\$129,192	\$89,024
Program Donations	\$437,366	\$-
Provision for Future Programs	-\$267,913	\$-
Government Funding	\$15,200	\$102,974
Sponsorship, Event and Other Income	\$67,868	\$3,136
	\$438,684	\$270,735

Expenditure

Operational expenses	\$295,668	\$230,204
Grants Paid and Provided	\$160,937	\$-
Program Fees	\$8,516	\$-
	\$465,121	\$230,204

Surplus / Deficit for the Year

	-\$26,437	\$40,531
--	------------------	-----------------

Balance Administration Fund at the beginning of the year

	\$607,459	\$566,928
--	-----------	-----------

Balance Administration Fund at the end of the year

	\$581,021	\$607,459
--	------------------	------------------

* The Resilience & Regeneration Fund opened in 2020 is a Flow Through Fund with all donations distributed to Recovery & Resilience Grants in 2021

* The Impact Now Housing & Homelessness Fund is a Flow Through Fund with all donations distributed to Community Grants in 2022

FINANCIAL REPORT

Northern Rivers Community Foundation – Abridged Financial Statement THE YEAR ENDED 31 DECEMBER, 2021

	2021	2020
	12 Months	12 Months
EQUITY FUNDS	\$	\$
Settlement Sum	60	60
Accumulated Funds	2,651,493	2,362,067
TOTAL EQUITY	2,651,553	2,362,127
Represented by		
CURRENT ASSETS		
Cash & Cash Equivalents	448,563	518,488
Trade & Other Receivables	15,400	20,000
Other Assets	335,392	249,055
Financial Assets	2,187,216	1,618,055
Total Current Assets	2,986,571	2,405,598
NON CURRENT ASSETS		
Financial Assets	0	0
Right of Use Assets	1,151	0
Total Non Current Assets	1,151	0
TOTAL ASSETS	2,987,722	2,405,598
CURRENT LIABILITIES		
Trade and other Payables	16,541	21,018
Unearned Income	285,332	2,187
Provisions	33,098	20,266
Lease Liability	1,198	0
Total Current Liabilities	336,169	43,471
NON-CURRENT LIABILITIES		
Long Term Provisions	0	0
Lease Liability	0	0
Total Non Current Liabilities	0	0
TOTAL LIABILITIES	336,169	43,471
NET ASSETS	2,651,553	2,362,127

	2021	2020
	12 Months	12 Months
REVENUE	\$	\$
Donations & Gifts Received	650,012	848,392
Investment Income	76,677	58,866
Other Income	140,038	181,712
Fair value gain on available-for-sale financial assets	25,708	150,056
Fair value gain (loss) on revaluations of available-for-sale financial assets	163,920	-122,496
TOTAL REVENUE	1,056,356	1,116,529
EXPENSES		
Administration, Fees and Costs	365,224	315,865
SURPLUS (DEFICIT) FROM OPERATING ACTIVITIES	691,133	800,665
Grants and Disbursements	401,707	396,545
Surplus (Deficit) for the year	289,426	404,119
Accumulated funds at beginning of the year	404,119	0
Less distribution of Capital for Administration		
ACCUMULATED FUNDS AT END OF THE YEAR	693,545	404,119

*Note: figures are sourced from Audited Financial Statements_MF Partners Ballina NSW 2478

REPORT OF THE INDEPENDENT AUDITOR

on the Abridged Financial Statements for Northern Rivers Community Foundation

OPINION

The abridged financial statements, which comprise the abridged statement of financial position as at 31 December 2021 and the abridged income statement for the 12 months then ended, are derived from the audited financial report of Northern Rivers Community Foundation for the year ended 31 December 2021. In our opinion, the accompanying abridged financial statements are consistent, in all material respects, with (or a fair summary of) the audited financial report, in accordance with the Charitable Fundraising Act 1991 and Taxation Administration Act 1953 - Public Ancillary Fund Guidelines 2011.

ABRIDGED FINANCIAL STATEMENTS

The abridged financial statements do not contain all the disclosures required by the Charitable Fundraising Act 1991 and Taxation Administration Act 1953 - Public Ancillary Fund Guidelines 2011. Reading the abridged financial statements and the auditor's report thereon, therefore, is not a substitute for reading the audited financial report and the auditor's report thereon. The abridged financial statements and the audited financial report do not reflect the effects of events that occurred subsequent to the date of our report on the audited financial report.

THE AUDITED FINANCIAL REPORT AND OUR REPORT THEREON

We expressed an unmodified audit opinion on the audited financial report in our report dated 22 February 2022.

MANAGEMENT'S RESPONSIBILITY FOR THE ABRIDGED FINANCIAL STATEMENTS

Management is responsible for the preparation of the summary financial statements in accordance with the Charitable Fundraising Act 1991 and Taxation Administration Act 1953 - Public Ancillary Fund Guidelines 2011.

AUDITOR'S RESPONSIBILITY

Our responsibility is to express an opinion on whether the abridged financial statements are consistent, in all material respects, with (or are a fair summary of) the audited financial report based on our procedures, which were conducted in accordance with Auditing Standard ASA 810 Engagements to Report on Summary Financial Statements.

MF Partners Chartered Accountants



Mark Charter – Registered Company Auditor

Address: Level 1 95 Tamar Street Ballina NSW 2478

Dated at Ballina this 22 February 2022

THANK YOU

NRCF would like to acknowledge the support of all our funding partners, sponsors, donors, partners and volunteers who have generously contributed to NRCF throughout the year.

GRANT PROGRAM PARTNERS



NRCF SPONSORS



IN-KIND SUPPORT

Arakwal Corporation, Barefruit Marketing, Byron Bay Herb Nursery, Byron Bay Services Club, CrewMark, Fingal Head Coastcare, Ginger Nectar, Herbert Smith Freehills, Jennifer Turner Design, Junkyard BBQ, Kurt Peterson Photography, MF Partners, Mullumbimby Hire, Right Eye Creative, Shai Shriki, Shout For Good, Stone & Wood, Summerland Credit Union, The Farm Byron Bay, The Sun Bistro, Three Blue Ducks, Waangenga Blanco, Woven Motion.

Thank you to everyone who donated to the NRCF in 2021, including:

Alan Heathcote, Ali McNabney, Alison Fittler, Ana Davis, Andrew Narracott, Anju Reetun, Anna Dicker, Anna Rose, Anne Cook, Anne Whittingham, Antony & Wendy King, Beach Suites, Belinda Carle, Belinda Seaton, Bob & Patti Lowry, Brad Tom, Bruno Kortenhorst, Byron Bay Coffee Company, Byron Bay First National Real Estate, Byron Beach Realty, Byron Coatup, Cactus Hill Project, Cara Austen, Catherine Patterson, Charmian Bourne, Chris Abraham & Carole Gamble, Christopher Dean, Chrystal Jameson, Coral Jones, COREM - Community-Owned Renewable Energy Mullumbimby, Crystal Rose Byron Bay - Tracee Thomson, Damien Hellwege, David Brown, Don Rowley, Donald Recsei, Elizabeth Welch, Emily Berry, Emma Rennie, Erez Tal, Eunice Ching, Franco Ivancich, Furry dogmother - Elysia Walton, Gai Harris, Gary Brazenor, Genevieve Messenger, Hamilton Barnett, Hayley Katzen, Henri Bader, Ingrid Johansen, Isabel Studer, Ishka Meh Massey, James & Meera Dods, Janene Hellwege, Janét Moyle, Jason Lavigne, Jenelle Stanford, Jennifer Joiner, Jim Olivier, Johan Kortenhorst, John Bennett, John Callanan, Josephine Wolanski, Juanita Keen, Jules Hunt, Julia Rochelli, Julie C Wallis, Kathleen Cator, Katie Moore, Leigh Eggins, Leslie Ford, Linda Grace, Lisa Daw, Lisa Griffiths, Liz Friend, Lynda Clark, Lynda Dean, Lyndy Lee, Lynne Frolich, Maggie Robertson, Margo Hills, Mariette Maclurcan, McGrath Estate Agents Ballina, Megan Kearney, Mela Macquarrie, Michael Leach, Michael Murray, Michaela Arnott Foundation, Michelle & Paul Amar, Millwood Consulting - Allison Henry, Nicole Weber, Nikki Beaumont, Nina Stevenson, Ninian Gemmell, Northern NSW Chapter Inc - Harley Owners, Olivia Grosser, Paul Kelly, Perry Mark Smith, Peter & Carole Lamont, Peter & Julianne Bowen, Peter Dean, Phil Daly, Philippa Visser, Potency Pty Ltd - Vicky King, Print Rescue - Paul Begg, Quentin & Teena Wright, Rachel Walker, Rangi Jackson, Raphael Lee Cass, Rebecca Gibson, Red Ginger Asian, Ree Evans Hill, Reine Dubois, Rita McIlwraith, Robbie Henderson, Robert & Maxene Hosie, Robert Bleakley, Rosamund Antaw, Rosemary Molloy, Rusty's Byron Guide magazine, Sara Hughes, Sarah Hayton, Sasha Mainsbridge, Scratch Patisserie - Angie Wilton, Sharon & Bruce Cadwallader, Simon Dubois, Sunsistas Book Club, Susan Campbell, Terry Davis, The Dunnet Foundation Ltd, The Farm Byron Bay, The Health Lodge, The Late David Walter Matthews, The Late Joyce Beckwith, Transec Pty Ltd - Gerard Vos, Trevor & Jan Smith, Trish Oxford, Ulf Steinvorth, Vanessa Mathews, Victoria King, Zenith Virago.

THANK YOU. We couldn't do it without you.

BECOME INVOLVED

We are always on the look out for motivated people who are passionate about giving back to our community. You could have a special skill or capability, or you just feel you want to help.

DONATE: nrcf.org.au/giving

VISIT: nrcf.org.au/get-involved

PHONE: 0499 862 886




EMAIL: info@nrcf.org.au



Northern Rivers Community Foundation
PO Box 304 CLUNES NSW 2480
T: 0499 862 886 | E: info@nrcf.org.au
www.nrcf.org.au

ABN 62 853 581 899
(The Trustee for the Northern Rivers Community Foundation)



 [northernriverscommunityfoundation](https://www.facebook.com/northernriverscommunityfoundation)  [thenrcf](https://www.instagram.com/thenrcf)  [Northern Rivers Community Foundation](https://www.linkedin.com/company/northern-rivers-community-foundation)

This Annual Report is printed on 100% recycled paper.
Please consider sharing this document with like-minded individuals in your community.